



SURYA METALINDO PARTS

WE ARE YOUR SOLUTION

WWW.SURYAMETALINDO.ID

PRODUCT CATALOGUE





TABLE OF CONTENTS

Table of Contents	01
About Us	02
Brands	03
Undercarriage	04
Bucket	06
Recoil Spring	06
Lubricant	07
Oil	07
Tire	07
Radiator & Oil Cooler	08
Hose	08
Swing Part	08
Bolt	09
Bearing	09
Bushing	09
Filter	10
Final Drive	10
Turbo Charge	11
Shim	11
Water Pump	11
Pump	12
Seal	13
Engine	16



- Established in 2018 in Samarinda as an importer of heavy equipment spare parts.
- Expanded in 2021 with the opening of our first branch in Balikpapan.
- In 2022, we became the main distributor of the "ENZZOTRACK" brand.
- By 2023, we secured the position of exclusive distributor of "SINOPEC Lubricant" for the East Kalimantan and North Kalimantan regions.
- In 2024, we expanded our product line to include the latest high-quality tires under the "COCREA" brand.



BRAND PRODUCTS



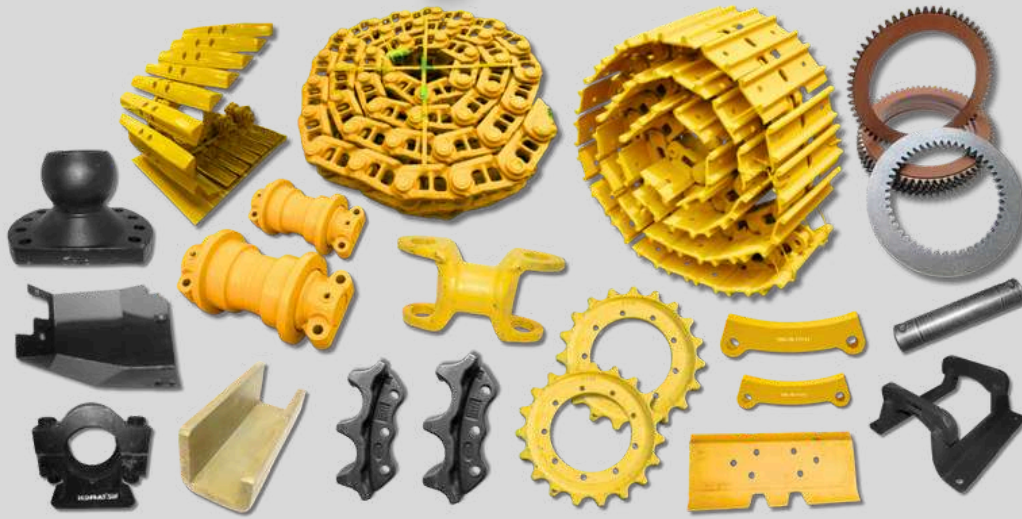
VARIOUS BRAND COMPATIBILITY



Our products are compatible with a wide range of machine brands, ensuring versatile and reliable performance across a wide range of units.



Undercarriage



Pivot



Protector



Rear Cover



Segment



Shaft Idler



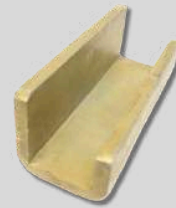
Shaft Joint



Sprocket



Steering Clutch



Strip Wear



Track Guard



Track Link Assy



Track Link



Track Roller



Track Shoe



Track Swamp



Trunnion

Other models are also available.
Please contact us for more detailed information.



Undercarriage



Ball Joint



Brace



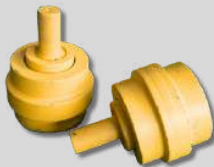
Bracket



Bushing Master Link



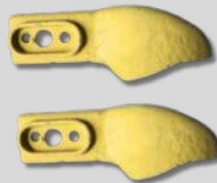
Cap



Carry Roller



Connector



Cover Cylinder



Cover Idler



Cylinder Lift



Engine Hood



Front Idler



**Guard Depan,
Belakang**



Master Link



Mata Link



Muffler



**Pin Cooter,
Pin Equalizer**



**Pin Master Link,
Pin Shaft**



Pin Track

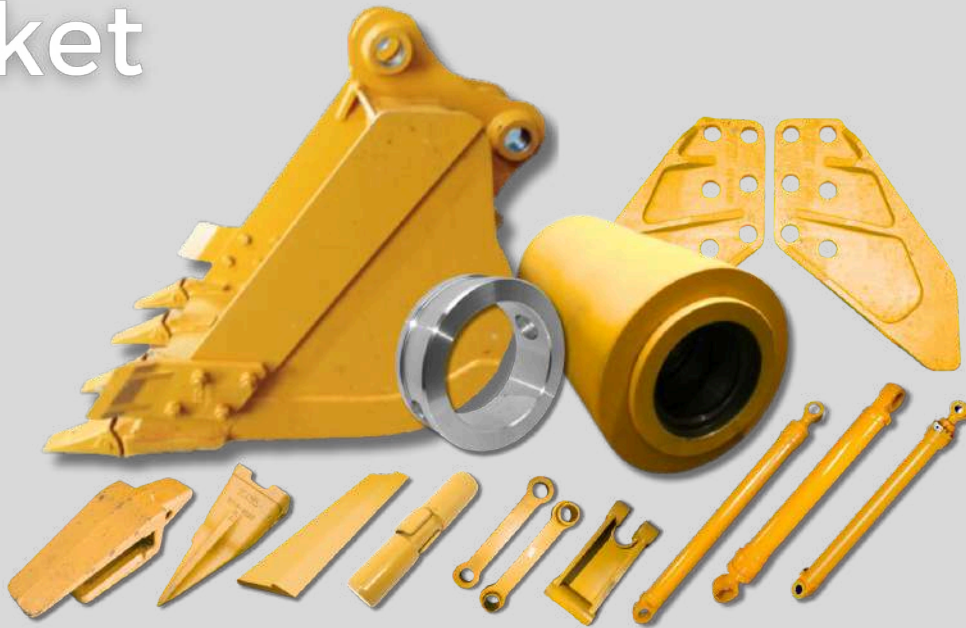


Piston Track Adjuster

Other models are also available.
Please contact us for more detailed information.



Bucket



Adapter



Bucket



Cutting Edge



Cylinder Arm



Cylinder Boom



Cylinder Bucket



End Bit



H-Bucket



Bucket Ear



Link I



Tooth & Pin Tooth



Bush Arm

Recoil Spring



Cylinder Adjuster



Recoil Spring



Recoil Spring Assy



Holder



Tabung Track Adjuster



Spring Holder



Yoke Idler

Other models are also available.
Please contact us for more detailed information.





Lubricant Radiator Coolant



Oil



Engine Oil



Gear Oil



Transmission Oil



Hydraulic Oil



Hydraulic Transmission Fluid



Grease



Turbin Oil

Tire

Available in sizes
7.5 to 29.5 - 25



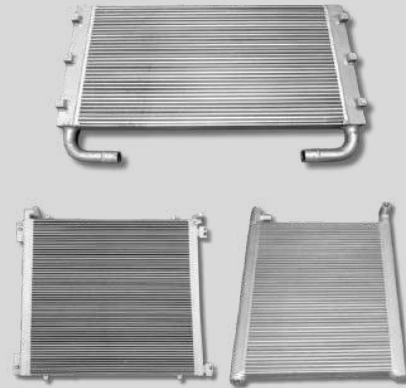
Other models are also available.
Please contact us for more detailed information.



Radiator & Oil Cooler



Radiator



Hydraulic Oil Cooler

Hose

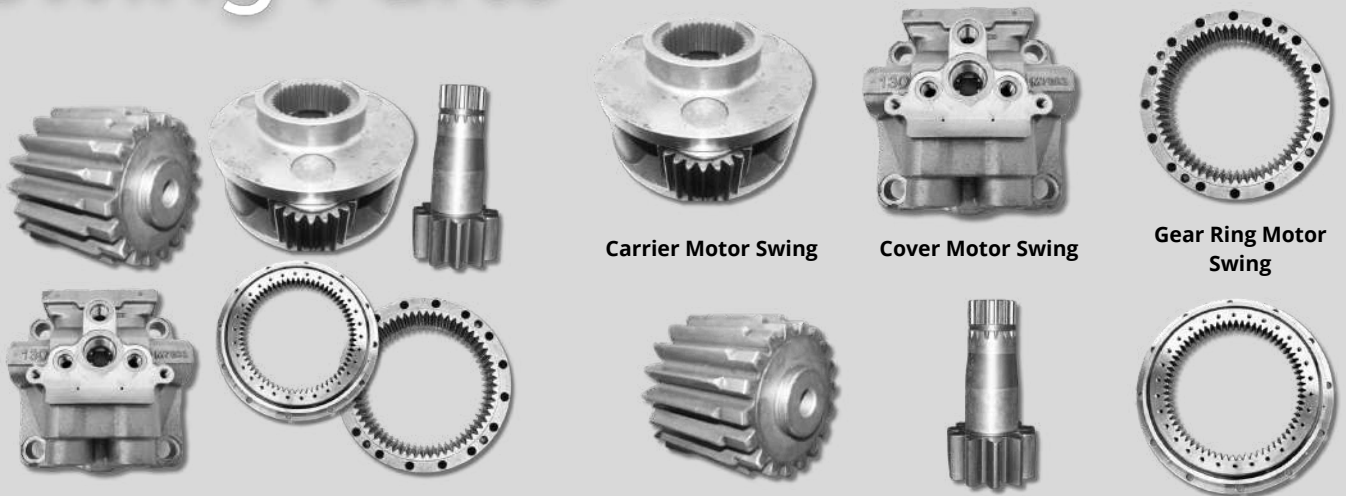


Hose Hose Adapter Hose After Cooler Hose Clamp

Hose Elbow Hose Fitting Hose Multipurpose Hose Radiator

Hose Sleeve Hose Split Flange Hose Spring Hose Turbo

Swing Parts



Carrier Motor Swing

Cover Motor Swing

Gear Ring Motor Swing

Gear Sun Motor Swing

Shaft Swing

Swing Bearing

Other models are also available.
Please contact us for more detailed information.





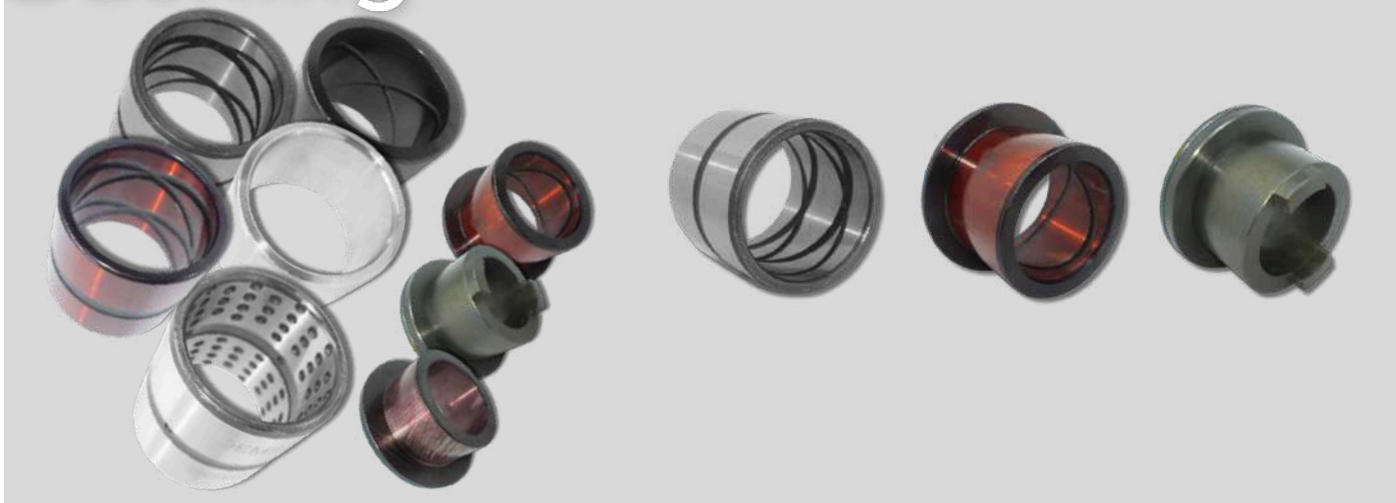
Bolt



Bearing



Bushing



Other models are also available.
Please contact us for more detailed information.





Filter



Clear Bowl



Element Filter



Filter Assy



Filter Breather



Filter Cartridge



Filter Hydraulic



Filter Hawa



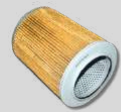
Filter Oil



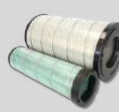
Filter Pump



Filter Solar



Filter Strainer



Filter Udara



Fuel Filter



Head Filter



Racor



Water Separator

Final Drive



Bearing Needle



Carrier



Cover Travel Motor



Gear Carrier



Gear Ring



Gear Sun



Gear Tilt



Hub Jantan



Hub Sprocket



Mur Travel Motor



Pin Spring



Plug



Shaft Betina



Shaft Jantan



Thrust Washer



Travel Device

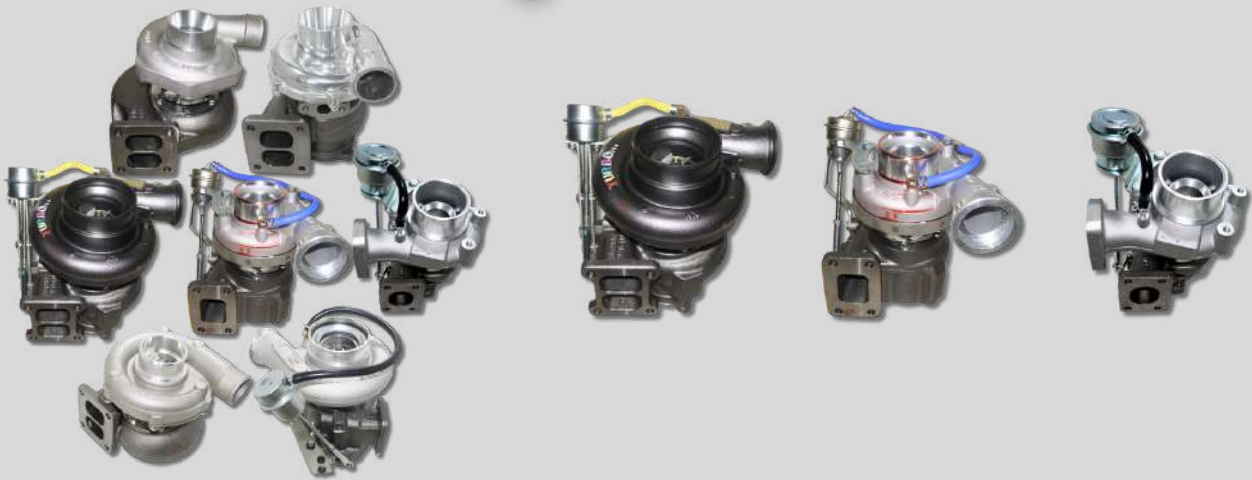


Travel Motor

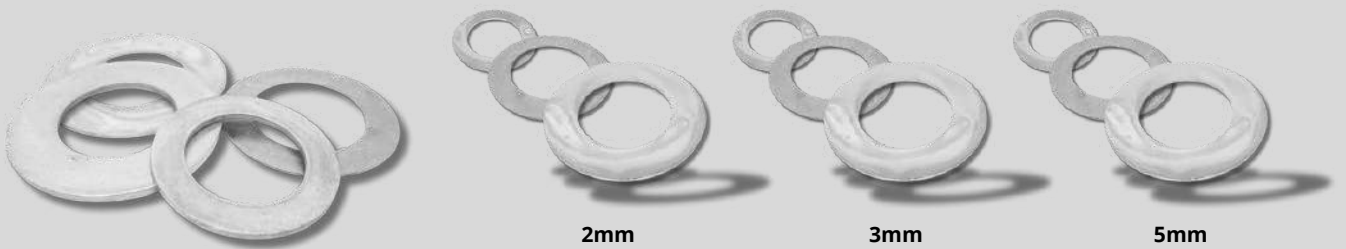
Other models are also available.
Please contact us for more detailed information.



Turbo Charge



Shim



2mm

3mm

5mm

Water Pump



Other models are also available.
Please contact us for more detailed information.



Pump



Ball Guide



Cam Rocker



Cradle Pump



Drive Shaft Motor Swing



Drive Shaft Pump



Drive Shaft Travel Motor



Fuel Pump



Gear Drive Pump



Gear Pump



Head Pump



Piston Servo



Piston Shoe Motor Swing



Piston Shoe Pump



Piston Shoe Travel Motor



Piston Swash Plate



Plate Valve Motor Swing



Plate Valve Pump



Plate Valve Travel Motor



Pump



Feed Pump

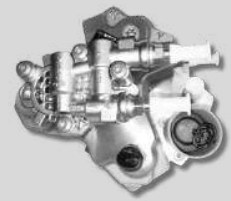
Other models are also available.
Please contact us for more detailed information.



Pump



Spring Pump



Supply Pump



Swash Plate Pump



Swash Plate Travel Motor



Retainer/Set Plate Motor Swing



Retainer/Set Plate Pump



Retainer/Set Plate Travel Motor



Rotor Motor Swing



Rotor Pump Plate Valve



Rotor Pump



Rotor Travel Motor



Shaft Center



Shoe Plate Motor Swing



Shoe Plate Pump

Seal



Seal Ring



Seal Ring Transmission



Seal Ring Wear



Seal Rocker Level



Seal Shaft Swing



Seal Swing Bearing



Seal Tilt

Other models are also available.
Please contact us for more detailed information.



Seal



Oring Bucket



Oring Control Valve



Oring Final Drive



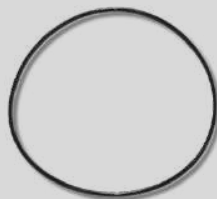
Oring Gear Pump



Oring Injector



Oring Kit



Oring Liner



Oring Main Pump



Oring Motor Swing



Oring Travel Motor



Oring Water Pump



Ring Backup



Seal Adjuster



Seal Arm



Seal Blade



Seal Boom



Seal Bucket



Seal Capit



Seal Cash Pump



Seal Center Joint

Other models are also available.
Please contact us for more detailed information.



Seal



Seal Crank Shaft



Seal Crevice



Seal Dust



Seal Equalizer



Seal Foot Valve



Seal Front



Seal Group Final Drive



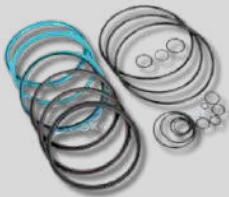
Seal Group Track Roller



Seal Handle



Seal Mata Link



Seal Kit Breaker



Seal Lift



Seal Motor Swing



Seal Oil



Seal Oring



Seal Pedal



Seal Power Steering



Seal Rear



Seal Rectangular Ring

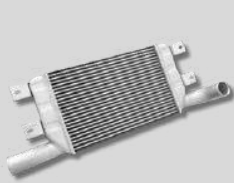


Seal Relief

Other models are also available.
Please contact us for more detailed information.



Engine



After Cooler



Alternator



Block Engine



**Bushing Camshaft,
Klep, Sokar**



**Cable, Cable Gas,
Harness, Lever, Pedal**



**Cap Cooter, Cap Engine,
Cap Valve Rocker Arm**



Case Control Valve



**Center Joint Assy,
Center Pin**



**Clamp, Clamp Muffler,
Clamp Turbo**



Commonrail Assy



Connecting Rod



**Connection By Pass,
Water Outlet**



Conrod Bearing



Controller



Coupling



**Cover Acces Hole, Cover Gear,
Cover Oil Cooler, Cover Rear**



Crank Shaft



**Cross Head,
Cross Joint**



Cylinder Head



**Disc Dumper, Motor Swing, Plate,
Tilt, Transmission, Travel Motor**

Other models are also available.
Please contact us for more detailed information.



Engine



Elbow



**Elektrik Pump,
Fuel Pump**



Element Oil Cooler



End Rod



**Fan Band,
Fan Rubber**



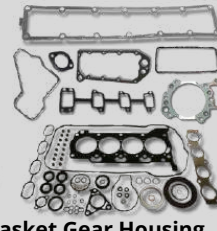
Foot Valve



Fuel Lift Pump



**Gasket, Connection, Coverr
Exhaust Manifold, Exhaust Pipe,
Filter Head, Flange, Gear Cover**



**Gasket Gear Housing, Head,
Inlet Manifold, Intake, Kit, Oil Cooler,
Oil Pan, Rear Cover, Thermostat, Tube
Turbo, Valve, Water**



Injector



Insertt In, Ex



**Jet Cooling Nozzle,
Jet Oil**



**Joint Assy, Joint Ball
Joint Handle**



Klep In, Ex



Liner



Main Bearing



Monitor



Motor Gas



**Nozle Assy,
Nozzle Piston**



**Oil Cooler Engine, Oil Pump,
Oil Temperature**

Other models are also available.
Please contact us for more detailed information.



Engine



Pilot Valve



**Pin Cylinder Head, Pin Piston
Pin Shaft, Pin Stopper**



**Tube,
Pipe Supply Pump**



**Pipe Assy, Pipe Exhaust
Pipe Oil, Pipe Spill**



**Piston Engine,
Piston Handle**



**Plate Denso, Plate Disc Travel Motor
Plate Motor Swing, Plate Transmission**



Priming Pump



**Pulley Crank Shaft,
Pulley Fan, Pulley Water Pump**



Push Rod



Reducing Valve



Relay, Relay Starter



**Relief Limiter Valve,
Relief Valve**



**Retainer, Ring Back up
Ring Gear, Ring Piston,
Ring Retaining, Ring Snap,
Ring Thrust**



Seal Valve



**Sensor Cam Angle,
Camshaft Assy, Commonrail,
Oil Level**



**Sensor Oil Water Separator,,
Sensor Potensiometer, Sensor Pressure,
Sensor Reducing, Sensor Revolution,**



**Sensor Speed, Sensor Switch Pressure,
Sensor Tachometer, Sensor Temperature,
Sensor Water Temperature**



**Shaft Gear Pump,
Shaft Level Rocker, Shaft Tilt**



Shuttle Valve

Other models are also available.
Please contact us for more detailed information.



Engine



 <p>Solenoid, Solenoid Supply Pump Solenoid Valve</p>	 <p>Spring Compress, Spring Klep Spring Seat, Spring Valve</p>	 <p>Stang Motor Gas</p>	 <p>Starting Motor</p>	 <p>Stop Engine, Stop Shut Off Fuel Solenoid, Stop Solenoid</p>
 <p>Spacer Mounting, Spacer Rear Wheel</p>	 <p>Switch, Switch Assy, Switch Battery, Switch Magnetic, Switch Oil Pressure,</p>	 <p>Switch Oil, Switch Starter Switch Relay Starter</p>	 <p>Tappet</p>	 <p>Tensioner</p>
 <p>Thermostat</p>	 <p>Thrust Bearing</p>	 <p>Tie Rod</p>	 <p>Transfer Pump</p>	 <p>Tube, Tube Breather, Tube Fuel Drain</p>
 <p>Oil Cap, Radiator Cap, Hydraulic Tank Cap, Solar Tank Cap</p>	 <p>Unload Valve</p>	 <p>Valve Assy</p>	 <p>Van Belt</p>	 <p>Water Temperature</p>

Other models are also available.
Please contact us for more detailed information.





SURYA METALINDO PARTS

WE ARE YOUR SOLUTION

WWW.SURYAMETALINDO.ID



GET IN TOUCH

Call / Whatsapp



+62 821-3337-3088 / +62 813-4964-4178



suryametalindoparts@gmail.com



www.suryametalindo.id



Jl. Pulau Banda No.22, Samarinda, East Kalimantan, Indonesia 75113



Jl. Pendekat Pulau Balang KM.13, Komplek Pergudangan Kariangau Center C-7, Balikpapan, East Kalimantan, Indonesia